

Oregon Wild Sheep Foundation



OREGON



WILD SHEEP
Foundation

Dan Epp
DAN EPP PHOTOGRAPHY

Spring/Summer 2023

Officers & Board

President: Walter Chuck Jr.Term Expires 2024
1st Vice President: Kevin Martin.....Term Expires 2024
2nd Vice President: Craig Foster.....Term Expires 2025
Treasurer: Marcus Gores.....Term Expires 2025
Secretary: Liz Wurdinger.....Term Expires 2025

Board:

Walter Chuck Jr., Kevin Martin, Craig Foster, Marcus Gores, Liz Wurdinger,, Zach Peterson, Tom Peterson, Vic Coggins, Larry Jacobs, Shane Byerly, John McCollum III, David Geelan, Don South, Brent Tannock, Ray Wurdinger.

Newsletter Production:

Editor in Chief: Marcus Gores

Editor: Kevin Martin

If you would like to inquire about advertising space in our quarterly newsletter, please reach out to Info@oregonfnaws.org for availability and pricing

Newsletter

SPRING/SUMMER 2023

1-2	<i>ORGANIZATION INFO</i>
3-4	<i>EDITOR'S MESSAGE</i>
5	<i>2024 ANNUAL BANQUET</i>
8	<i>MEMBERSHIP UPDATE</i>
9-10	<i>MINAM RIVER</i>
12-16	<i>GOVT & LEGISLATIVE</i>
17-18	<i>GIA FUNDING FOR OR WSF</i>
19-22	<i>SUCCESSFUL 2023 HUNTERS</i>
23	<i>UPCOMING EVENTS</i>

3 Editor's Message

Marcus Gores



With growth comes change. We are growing folks and it is amazing to see. With our membership numbers rising and the amount of funds we are raising for Wild Sheep increasing we are changing with the growth. We have been focusing on a lot of items surround OR WSF such as membership transition and banquet planning and organizing.

We are making a few changes to how we manage our membership as well as how we are organizing our banquet to improve the membership and user experience.

I know this newsletter comes later than expected but please excuse the tardiness as we have been working through transitions for a better end result of serving you as our membership.

We look forward to better serving you with our newly freed up time as well as serving Wild Sheep and Mountain Goats in our amazing state

Marcus Gores

OR WSF Treasurer

5 | 2024 Annual Banquet

Our 2024 Annual Banquet is coming up quick! Tickets will go live in the beginning of January. We have a limit of 400 people! This event will sell out so be sure to get your tickets when they go live!

Things to look forward to at the banquet: Wall of Guns, Sam Mason Card Game, Rack of Purses, \$5,000 auction credits, General raffle Items, Annual Member Gun Raffle, Life Member Gun Raffle, Dall Sheep Hunt Raffle, and much more!

One of the best ways to help us raise money for wild sheep going into the banquet is by donations either financially or in products or experiences to put in the raffles, silent auction, or live auction.

If you have anything you would like to donate please email us @ info@oregonfnaws.org and we will get a donation form filled out and coordinate donation pick up.

OR WSF 25TH Annual Banquet

WHEN: MAY 4th, 2024

**WHERE: RiverHouse on the Deschutes
Bend, Oregon**

WHO: All of you!



What separates posers from the real deal?



← **This badge.**

Only 2% Certified™ brands can prove their commitment to conservation. It's about accountability.

To the wildlife your business depends on.
To your customers. To your legacy.

We don't dictate where or how you give to wildlife.
We certify that you've done it.

With members worldwide, the sun doesn't set on the measure of a True Conservationist:
1% Time + 1% Money = 2% for Conservation

Make your mark, prove your effort: fishandwildlife.org

Membership Take Over

Marcus Gores

Our organization continues to strive based on the membership support we have gained over the years. With that we want to continue to grow as well as unify our membership with Wild Sheep Foundation (Nationals). We will be transferring all the membership organization and processing through WSF.

What does this mean for current members? We will be sending WSF nationals our current and active membership list with contacts so WSF can follow up with renewals and updated information. Any updating or renewals will now be through WSF website.

We have made this decision as a board so we can spend more time focusing on sheep projects, conservation efforts, and engagement as opposed to organizing and updating membership. Membership management is a large time commitment and having WSF Nationals manage our membership will allow us to do more in the field and more for fundraising for Wild Sheep projects.

Common Questions:

Does WSF take a percentage of sales for managing membership? NO. they do this at no charge to us so all of membership dollars can go directly back to putting and keeping wild sheep on the mountain.

Does this make all active members of OR WSF a member of WSF Nationals automatically? NO. Though it is highly encouraged for all of our membership to join and be a part of WSF Nationals.

Will any of my membership benefits change? NO. All of your current accesses, benefits, and perks for being an OR WSF member will not change.

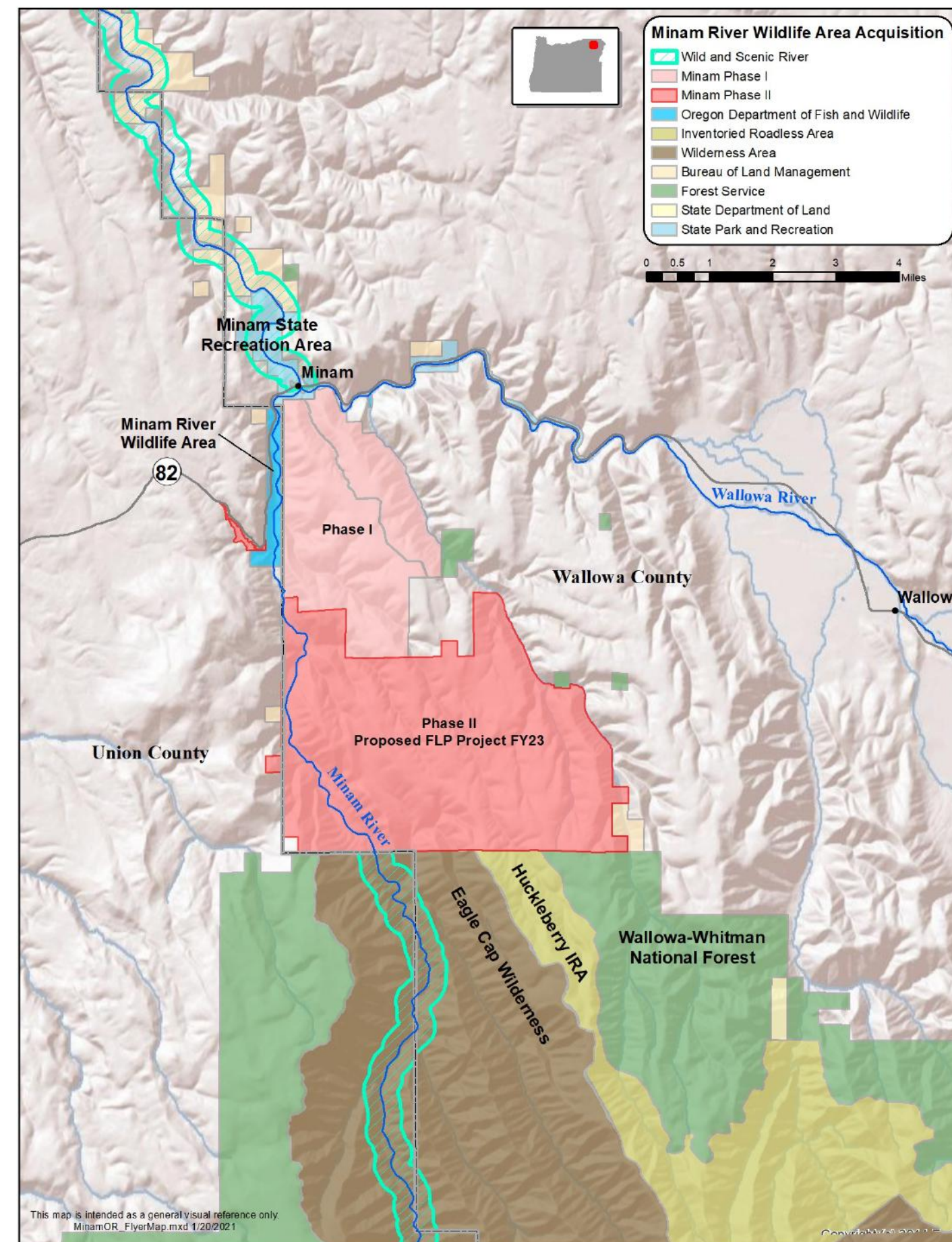
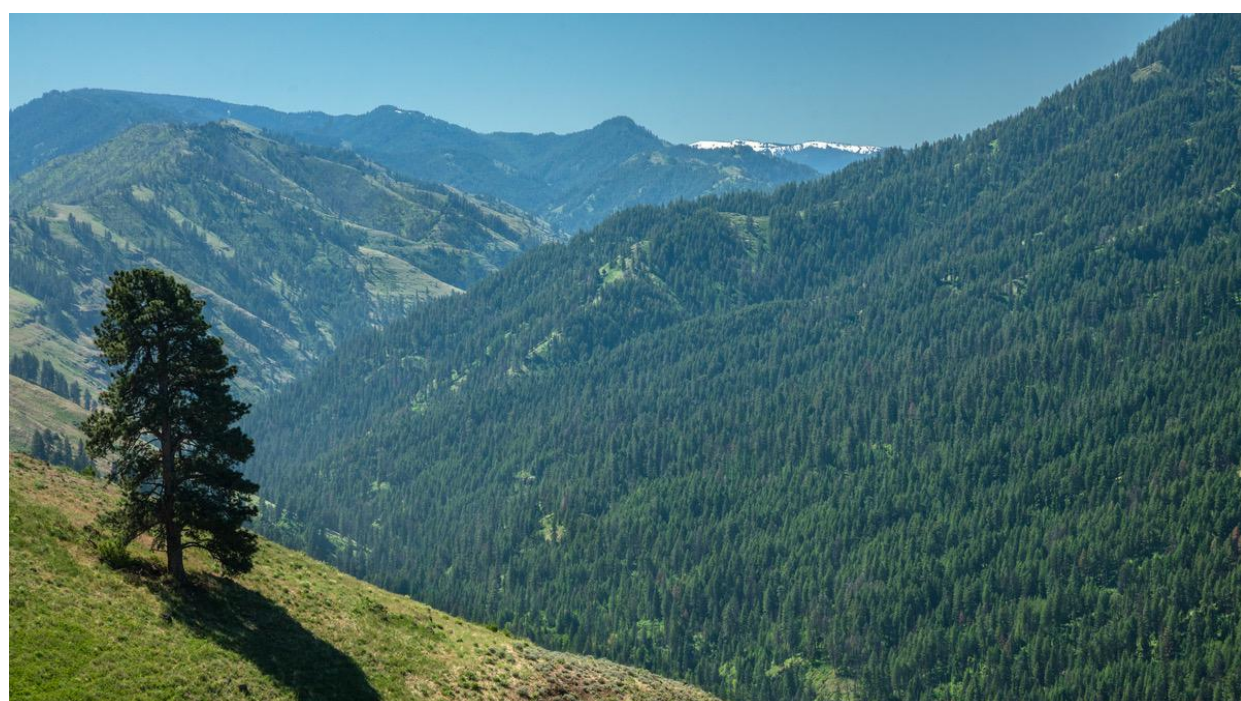
Thank you all so much for working with us through this transition. We cannot wait to work with Wild Sheep Foundation to handle membership for Oregon WSF and be able to focus more energy and time to raising money and working with Wild Sheep!

Minam River Land Acquisition

Oregon Wild Sheep foundation is one of the numerous groups affording the financial offset of the Minam River Land Acquisition. In late 2023 the project is expected to close and when it does the property purchased will boast 6 miles of historic Minam River Trail and put almost 99% of the Minam River in permanent conservation status/public ownership. Bordering the Eagle Cap Wilderness and located 30 miles northeast of Le Grande, the Minam River Wildlife Area will conserve and open public access to over 15,000 acres along the Minam River. This is prime habitat for Bighorn Sheep, Mule Deer, Rocky Mountain Elk and many more species.

Oregon Wild Sheep Foundation committed \$25,000 toward the initial phase 1 purchase and has a goal of \$100,000 to put towards the final phase of the purchase. We are able to raise our goal and efforts thanks to a match in donation from Midwest Chapter Wild Sheep Foundation of \$25,000. Our second round is currently at \$50,000 in funds raised as we continue to reach out to chapters and affiliates as well as private individual donors to reach our goal of \$100,000 to put land back in the hands of the public for recreational use while preserving great land for our wildlife.

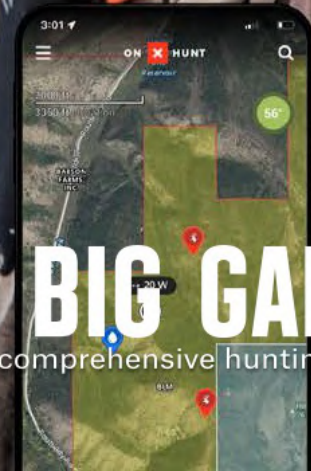
If you have any interest in donating or assisting in fundraising please reach out to us @ info@oregonfnaws.org



KNOW WHERE YOU STAND

TRUSTED BY BIG GAME HUNTERS

For more information on the most comprehensive hunting maps available visit: [ONXMAPS.COM/HUNT](https://onxmaps.com/hunt)



Government & Legislative Affairs

Kevin Martin

Funding Support for the Minam Wildlife Area Acquisition – Phase 2 –

ODFW has purchased the first phase of a large land acquisition in Northeast Oregon and is working on the second phase. The entire project will acquire 15,573 acres of critical fish and wildlife habitat and establish the Minam River Wildlife Area to be managed by ODFW.

For Phase 2, the Forest Service came through with \$9,754,000 for the Minam, to protect an additional 10,964 acres of working forestland and the Minam River. In total, Phases 1 and 2 include 15,573 acres that will be public lands managed for their wildlife and recreation opportunities.

OR WSF strongly supports the purchase. We have provided testimony and funds. The 2nd Phase - the Minam River State Wildlife Area Acquisition will complete the link of wildlife habitat from the Wallowa-Whitman National Forest, Eagle Cap Wilderness (WWNF) to the Minam State Recreation Area. This acquisition will ensure permanent protection of crucial habitat along a migration corridor for bighorn sheep, elk, mule deer, and other wildlife and will conserve approximately 160 miles of streams, including a significant stretch of the Minam River.

Acquisition of this property will secure public recreational access to the area and improve access to adjacent WWNF and Bureau of Land Management lands. Multiple recreational interests will have access to a remote, rugged, amazing landscape.

April 3, 2023 - Okanogan-Wenatchee National Forest; Washington; Forest Plan Amendment for Planning and Management of Domestic Sheep and Goat Grazing Within the Range of Bighorn Sheep; Correction

The WSF and Chapters & Affiliates signed a letter to the forest indicated that based on the overwhelming quantity of peer-reviewed, published scientific information, as cited in recent court proceedings and attendant expert declarations (e.g., Dr. T. Besser, Mr. T. Schommer), habitat for bighorn sheep is neither functional nor readily available to bighorns if domestic sheep permeate that habitat. Consistent with the National Forest Management Act (NFMA), as viability of bighorn sheep on the OOWNF is analyzed, please recognize that areas occupied by domestic sheep are largely unavailable to bighorn sheep as habitat.

The WSF, our Chapters and Affiliates, and other wild sheep conservationists, appreciate the OOWNF's recognition of the severity of contact between domestic sheep and goats and wild sheep, and commend you for seeking direction and improvement in managing domestic sheep and goat grazing, to better provide for bighorn sheep viability on the OOWNF.

Based on issues and concerns identified during 2019 scoping and your Corrected NOI, and, as alternatives are developed in this Forest Plan Amendment, we encourage the OOWNF and higher USFS authorities to fully acknowledge the science, Congressional Direction, and the identified risk of contact that status quo represents. We look forward to being involved in the OOWNF Plan Amendment, associated site-specific allotment management plans.

May 1, 2023 - FOREST ORDER NO. 06-16-04-23-01 - Restrictions on Domestic Sheep or Goats within the Hells Canyon National Recreation Area –

OR WSF with our partners, ODFW, WDFW, Nez Perce Tribe and CTUIR have been working closely with the Wallowa-Whitman National Forest (W-W) to address an ongoing trespass issue that has put our Hells Canyon bighorn sheep herds at risk for several years.

This spring the forest issued a forest order that restricts the use of the Hells Canyon NRA to domestic sheep and goats, including those used for recreation purposes.

July 5, 2023 – Comments on the proposed rule, “Conservation and Landscape Health”.

OR WSF signed a letter with other Chapter & Affiliates, developed by the WSF, on the BLM proposed rule asking that the BLM really needed to begin the process again and clearly explain the need, the how and assure all interested parties are given the proper notification to participate.

Government & Legislative Affairs

July 10, 2023 – NEPA and Herd management area plan and conduct population management actions (gather activities) for wild (feral) horses in the Murderer's Creek Wild Horse (feral) Joint Management Area.

In our letter, OR WSF urged a deeper reduction in the herd of feral horses in the Murderer's Creek Wild (feral) Horse Joint Management Area. The proposed reduction – if successful – would instantly result in another overpopulation. We would like the agencies to set the objective of keeping herd size within a safer level as prelude to the goal of eliminating the herd.

Some folks/organizations perceive these animals as a natural component of the environment, failing to recognize the wildlife and habitat damage they cause and the imperative of programs to reduce, control, and eliminate them. There appear few options to control overpopulation, which can lead to economic and ecological damage, as well as undermining the role of science in making informed resource management decisions.

Sportsmen for the Owyhee:

July 12, 2023 - Malheur Community Empowerment for the Owyhee Act (S. 1890).

The Owyhee Sportsmen Coalition (OR WSF is a member), including hunting and fishing organizations that represent more than 25,000 sportsmen and women in Oregon, continued to provide support, as well as continuing to suggest improvements needed to the Malheur Community Empowerment for the Owyhee Act (S. 1890). This important legislation aims to find collaborative solutions for the social and economic well-being of Malheur County and ensure benefits to fish, wildlife, and the local outdoor recreation economy.

We believe that the Owyhee Plateau is a landscape that should be safeguarded for future generations of American sportsmen and women, and we appreciate Senator Wyden's efforts to bring diverse stakeholders to the table to discuss ways to protect the Owyhee canyon country and the multiple uses it supports. Our organizations support the multiple uses of public land in this region and recognize that good stewardship means sustainable ranching, wildlife habitat management, public access, and meaningful resource conservation.

Senator Wyden is working hard to craft a bill that provides those protections, and we are supportive of S. 1890 overall but would like to see some adjustments and additions. We support the components of the bill related to economic development, community input, flexible grazing, and Wilderness designation. Access is important for management activities by land managers as well as hunters, anglers, and permittees. From a hunting and angling perspective there are some areas of the bill where we believe language could be added to improve the benefits for fish and wildlife. Together, we have provided language to improve the bill to the Senator's Office.

July 27, 2023 – Letter of support of the Hart Mountain National Antelope Refuge Wild Sheep Foundation grant-in-aid application for 2023-2024 for \$50,000.

The refuge is in the third year of implementing their bighorn sheep management plan and is an active member of the ION partnership. The refuge will continue cougar control to benefit the bighorn herd and is ready to start implementing the habitat management portion of the bighorn plan.

This year's application has two parts. First is a request for matching funds to start treating western juniper encroaching in bighorn habitat. The second is to contract with the University of Montana to develop a resource selection function and survival/recruitment models for bighorn on the refuge. Results from the U of M contract will assist the refuge in designing more effective habitat treatments.

Over the past 20 years OR WSF has partnered with the refuge on numerous bighorn projects and continues to assist with fixing the guzzlers on the refuge.

July 29, 2023 – Letter of Support and Application to the WSF grant-in-aid application for \$226,000 of a \$741,930 project proposal - California Bighorn Sheep Population Analysis, Test and Remove, Health and Disease Surveillance and Restoration in the ION Partnership Area.

The Idaho Wild Sheep Foundation (IDWSF), Oregon Wild Sheep Foundation (OR WSF), Elko Bighorns Unlimited, Nevada Bighorns Unlimited (NBU), Nevada Bighorns Unlimited-Midas Chapter, and Nevada Bighorns Unlimited-Fallon Chapter fully support this multi-jurisdictional management application for a Wild Sheep Foundation Grant-In-Aid. This is the second proposal in the Idaho, Oregon, and Nevada (ION) Partnership.

Using Test and Remove (T&R) methods developed and proven in the Hells Canyon Initiative and endorsed by the Wild Sheep Working Group's west wide Disease Management Venture (DMV) to identify carriers and clear Movi from free-ranging bighorn sheep populations. The T&R effort is being conducted in bighorn sheep populations in the Santa Rosa Range of Nevada and the 10 Mile/Rattlesnake Herds in Oregon. These bighorn herds are part of an interstate metapopulation that both states have acknowledged and have been collaboratively managing for over a decade. In addition to the Santa Rosa Range and 10 mile/Rattlesnake efforts, the hopeful final pathogen testing will be conducted in the adjacent Snowstorm Mountains which has been an on-going and Test and Remove project since 2016.

The Lower Owyhee herd is Oregon's third oldest reintroduced California bighorn sheep herd established in 1965. This herd grew to over 400 bighorns by 2015 when an Movi outbreak began in October 2015. The combination of very rugged terrain and bighorns being very wary of helicopters has made locating bighorns very difficult. To address this issue two survey methods were used last year to establish a base line population. This information was used to determine management options and next steps. These next steps include Test and Remove (T&R) methods developed and proven in the Hells Canyon Initiative and endorsed by the Wild Sheep Working Group's west wide Disease Management Venture (DMV) to identify carriers and clear Movi from free-ranging bighorn sheep populations in the Lower Owyhee herds.

This proposal would also increase genetic diversity and recreational opportunities with the transplant of California Bighorn sheep into the Montana Mountains, Nevada and Trout Creek Mountains, Oregon. In Oregon this would assist in reducing numbers on the John Day River and adjoining private lands, and boost numbers in SE Oregon near the Nevada state line. NDOW is going to conduct an experimental bighorn reintroduction to the Montana Mountains and work closely with the local woolgrower and volunteers to have daily vigilance while the domestics are on the private field adjacent to the Montana Mountains. The commitment to heightened vigilance and monitoring will also benefit the adjacent and nearby Double H Mountain bighorn herd just a few miles away.

California bighorn sheep were released into Jacks Creek, Idaho several times starting in 1967 after native sheep were extirpated in the early 1900s. The population grew to a high count of 360 animals. Following 1993, the number of bighorn sheep began to decline and the most recent survey in 2021 found 139 bighorn sheep. Causes of decline are unknown. In December of 2022, 29 bighorn were captured and health tested in the Owyhee Front and Jacks Cr. All were negative for Movi. Lamb surveys in 2023 indicate that recruitment may be low. Lamb survival rates were lower than desirable, with many lambs being lost in the first few weeks. Surveyors have also observed few yearling animals. Predation by mountain lions has been documented as a limiting factor in some bighorn sheep populations elsewhere in their range but long-term and current cause-specific mortality data is not available for these populations.

Bighorn sheep are known to cross the state boundary between Oregon and Idaho along the Owyhee Front towards Jacks Creek. In 2015, Leslie Gulch, Oregon (Lower Owyhee population) on the western side suffered a severe pneumonia outbreak and has not recovered. Oregon has a plan to address concerns in sheep populations along the Oregon/Idaho border in the Lower Owyhee and Idaho will be collecting additional information to do so as well.

In addition, there is an interesting analysis proposed by Oregon State University (Dr. Clint Epps) working with ODFW and the USFWS Hart Mountain National Antelope Refuge and Sheldon National Wildlife Refuge to identify potential pre-extirpation bighorn sheep skulls and attempt to gather some genetic samples. This could expand our historic knowledge of bighorn sheep populations across the great basin.

This year we will also begin a collaborative project with Sheldon National Wildlife Refuge and NDOW capturing and collaring bighorn sheep, mule deer, and mountain lions on and around the refuge. Then monitoring predation rates on ungulates to gather data to assist in future management decisions.

This proposal is for the second year of a multi-jurisdictional, multi-year management program to improve the health of the bighorn sheep populations in the Santa Rosa and Ten Mile/Rattlesnake populations (in Nevada and Oregon), the Lower Owyhee and Jacks Creek/Owyhee Front populations (Oregon and Idaho), increase numbers by releasing bighorns in the Trout Creeks, Oregon and Montana Mountains, Nevada, and better understand the population numbers, health and environmental factors effecting California bighorn sheep populations throughout the ION Partnership area. This project builds on research and management techniques used across the west.

Government & Legislative Affairs

July 27, 2023 – Letter of Support for the Tri-State Partners proposal – Optimizing Movi test and remove management to restore bighorn sheep populations - to the WSF grant-in-aid application for \$223,000 of a \$772,60 project proposal –

This is the fourth year of the multi-jurisdictional adaptive management project to further investigate the use of “test and remove” to clear *M. ovipneumoniae* (Movi) from ailing bighorn sheep populations in Idaho, Oregon, and Washington. This project is unique in that we are “going big” across multiple states and jurisdictions, analyzing data from the seven populations to improve implementation of disease management in bighorn sheep. What distinguishes this project is that this is a dedicated effort to combine forces and compare test and remove in different populations.

The objective is to improve the health of bighorn sheep populations at Burnt River, Oregon; Lookout Mountain, Oregon; Lower Salmon River, Idaho; Lostine, Oregon; and Yakima Canyon, Washington. Last year the project expanded to include the Lower Panther – Main Salmon population in Idaho which is adjacent to the Lower Salmon, Idaho and the Cleman Mountain population in Washington which is included as a control. The replicated design of this collaborative project across populations explores underlying factors that may affect Movi persistence and management, and the results will provide practical information that wildlife managers can use to speed recovery of bighorn sheep populations following pneumonia outbreaks.

This year we are proposing to capture and sample 300 sheep by helicopter net gun and ground darting in these seven populations. This project is designed as a manipulative experiment that builds on and improves previous T&R Movi clearance efforts. We are using adaptive methods to identify the least invasive, most efficient approaches to clearing Movi from free-ranging bighorn sheep populations. These seven focal populations represent a range of health and demographic histories (size, native vs reintroduced, etc.), patterns of space use, infection, and accessibility.

Gaining a better understanding of the patterns and determinants of health and disease in these populations would help in finding ways to make “test and remove” a more efficient management tool that can be used more widely in other sheep populations west wide.

As partners in the tri-state area, Idaho, Washington, and Oregon State Wildlife Agencies, Idaho, Washington, and Oregon WSF Chapters, the Forest Service, the BLM, the Confederated Tribe of the Umatilla Indian Reservation, and the Nez Perce Tribe we hope the WSF will join us in providing continued support for this project.

Oregon Sportsmen Conservation Partnership (OSCP): OR WSF is an active member in this statewide partnership.

As a member of Oregon Sportsmen Opposed to Gun Violence, we actively opposed Ballot measure 114. We are now part of the sportsmen organizations who are fighting this attack of hunting and shooting in court.

There are several issues of concern; it requires a currently nonexistent perming system to purchase firearms, creates a searchable database housing all permit holder’s information, has an enormous financial burden, and would outlaw all firearms that can hold 10 or more rounds in internal chambers/tubes. Because the permitting system will need to be created and implemented before any permits can be issued, it would effectively stop all firearms purchase until the system could be put into place, that could be years. This is not common-sense gun control and will not reduce criminal gun violence.

January 26, 2023 - House Bill 2532- Chronic Wasting Disease Funding.

We requested that the House Committee on Agriculture, Land Use, Natural Resources and Water pass House Bill 2532 (HB 2532), which would appropriate money to the Oregon Department of Fish and Wildlife and Oregon State University for purposes related to chronic wasting disease. We will continue to work on this issue with our partners.

Chronic wasting disease (CWD) is a progressive, fatal, degenerative neurological disease occurring in deer, elk, and other ungulates. CWD is a slow and progressive disease.

February 2, 2023 - House Joint Resolution 5 - Right to Fish, Hunt, Harvest and Gather.

On behalf of the many Oregonians who provide their families with foods from wild and foraged sources, The OSCP requested the House Committee on Rules pass House Joint Resolution 5 (HJR 5) which would put forth to the citizens of the state a constitutional right to fish, hunt, harvest, and gather. At this time, we have not been successful, but we will continue to develop strategies to move this forward.

Government & Legislative Affairs

February 2, 2023, and April 16, 2023 - House Joint Resolution 5 - Right to Fish, Hunt, Harvest and Gather.

OR WSF sent additional letters requesting the same, throughout the legislative session.

February 9th, 2023 - Support for HB 2999

The members of the Oregon Sportsmen’s Conservation Partnership, including OR WSF, strongly supported HB 2999. This bill would have strengthened the language within the Oregon Department of Transportation’s existing program to fund, study, and/or construct wildlife crossings in the state. Additionally, the bill would provide funding in the amount of \$5 million dollars from the General Fund to the Oregon Department of Fish and Wildlife to improve wildlife habitat connectivity within priority corridors identified within the recently completed Oregon Connectivity Assessment and Mapping Project.

March 27, 2023 - Senate Bill 348-1- Measure 114 Implementation

We shared our concerns with Senate Bill 348, legislation that would require an expensive and exhaustive permitting process for the lawful transfer or firearms, impose a 3-day waiting period on firearm purchases, impose training requirements on Oregon’s law-abiding hunters and recreational shooters, restrict firearm purchases for Oregon’s youth hunters under 21 years of age, and restrict standard capacity magazines that are commonly found in the hands of hunters and recreational shooters. This was a way to have the legislature pass a law similar to BM 114, which was being heard in the courts at the same time. This did not pass.

June 22, 2023 - HB 3086 - The bill to reform the Oregon Department of Fish and Wildlife Commission makeup had a public hearing on March 28. OR WSF provided both written and verbal testimony on this effort to reform the representative structure from congressional districts to a more regionally equitable model based on the five river basin management areas. We were successful in this effort and are now working with partners and the Governor’s Office on the positions, specifically, the new position in Eastern Oregon.

Wild Sheep Foundation Bi-Weekly Legislative Affairs Committee Calls – Larry Jacobs and Kevin Martin, representing OR WSF continue to participate in these biweekly calls for the WSF.

Bighorn Advocates Monthly Calls - Larry Jacobs, Vic Coggins, and Kevin Martin representing OR WSF continue to participate in these monthly calls with bighorn sheep advocates from across the country.

Tri-corner Community Collaboration – This is a Community Based Shared Stewardship Sagebrush Conservation Collaborative. This effort exchanges information, shares resources, builds relationships, and problem solves collaboratively. The collaborative seeks to discuss and reach consensus on specific, achievable, tangible, and measurable steps to promote healthy and sustainable sagebrush steppe, while preserving and promoting social, economic, cultural, and ecological values within the Tri-Corner Region where Oregon, California and Nevada come together. The area in Oregon includes southern Lake and Harney Counties from the Steens to Warner Valley. The collaborative formed in response to another effort by the environmental community to get additional special designations (Wilderness, National Monument, or combining Sheldon and Hart Refuges across the Beaty Buttes country). The goal is to develop a community based, working landscape vision for the landscape which can be used to respond to current and/or future special designation requests by the environmental community.

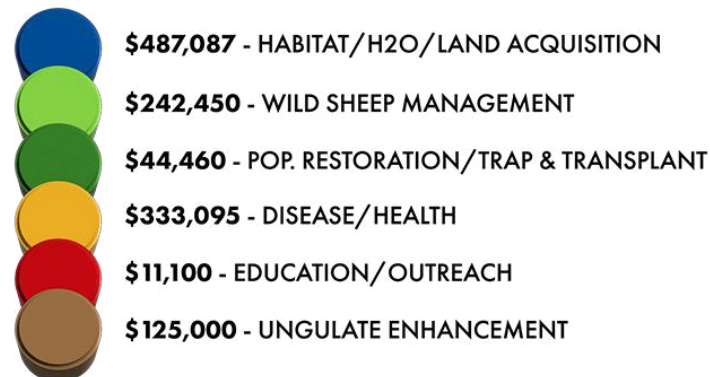
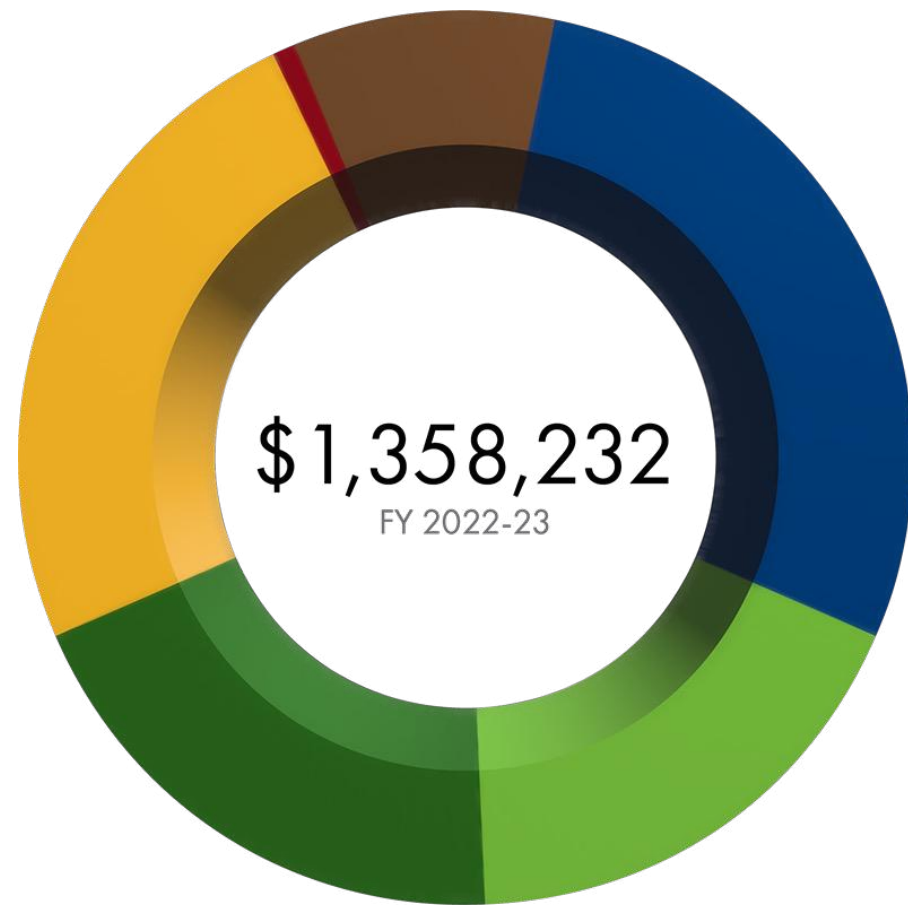
OR WSF was asked if we would be interested in participating in this new collaborative. Board member Craig Foster has volunteered to participate, keep us apprised, and assure us our interests are part of the ongoing conversations.

Grant-In-Aid Funding from WSF

Data from Wild Sheep Foundation website

TOTAL CONSERVATION GIA REQUESTS APPROVED: \$1,358,232

These \$1.358 Million in approved conservation grants are but one “bucket” of the \$2.7 Million Mission Programs budget in our July 1, 2022, through June 30, 2023, fiscal year. Added to the \$4.9 Million that will be directed to our state, provincial, and tribal/First Nation partners through 2023 conservation permit sales, WSF is on track to direct for the fifth year in a row more than \$6.5 Million annually in Mission Program Funding.



Three Major project help Oregon and the Wild Sheep that reside here as well as neighboring states. Information below regarding the grants funded:

Oregon/Idaho/Washington Test & Remove Bighorn Sheep Program

C&A Partners: Idaho WSF, Oregon WSF, and Washington WSF

Approved Grant: \$177,000

Summary

Year three (3) of multi-jurisdictional adaptive mgt project to further investigate “test and remove” to clear Movi from bighorn sheep populations. Objective: to improve the health of BHS populations at Burnt R., OR; Lookout Mtn, OR; Lower Salmon R., ID; Lostine, OR; & Yakima Canyon, WA. Year 2 work expanded to include Lower Panther – Main Salmon population in ID & Cleman Mountain population in WA as a control. In winter 2021-22, 249 bighorns in four (4) populations were captured/sampled. Year three (3) proposed to capture/sample 275 sheep in seven (7) populations.

California Bighorn Sheep Population Analysis, Test & Remove, Health and Disease Surveillance in Idaho, Oregon & Nevada (ION Initiative)

C&A Partners: Fraternity of the Desert Bighorn, Idaho WSF, Oregon WSF

Approved Grant: \$152,450

Summary

Two-Part Program: 1) Test & Remove Movi clearance efforts and 2) BHS herd survey, population analysis, and health/disease surveillance. WSF funding will be used for contracted helicopter services to capture and survey bighorns, and contracted infrared fixed-wing surveys, to cover fuel costs of volunteers accomplishing coordinated ground surveys, GPS collars and pathogen sampling and testing costs. Outreach and public information would be accomplished, including social media, press releases, articles in newsletters and video production.

Hart Mountain (Oregon) Bighorn Sheep Recovery

C&A Partners: Oregon WSF

Approved Grant: \$100,000

Summary

The California bighorn sheep herd on Hart Mountain National Antelope Refuge in SE Oregon declined from ~150 animals in 2017 to less than 48 in 2020. Consequently, the herd is at risk of extirpation without prompt management intervention. In 2022, the Hart Mountain Bighorn Sheep Management Plan & Environmental Impact Study was developed to identify management actions to aid herd recovery. An integrated management approach focusing on short-term predator control (mountain lions) and long-term habitat mgt (juniper control & added water sources) are specifically targeted to benefit and recover bighorn and support a sustainable herd. WSF funding will focus on short-term mountain lion control.

We are extremely thankful for the funding for our hands on projects as well as the opportunity to be apart of such a great group of Wild Sheep conservationists. More funding info regarding 2024 to come soon!

Successful 2023 Tag Holders



Successful 2023 Tag Holders



Upcoming Events

Winter Board Meeting:
January 6, 2024

Sheep Week:
January 18-20, 2024

Partners in Conservation
February 3, 2024

25th Annual Banquet Fundraiser
May 4th, 2024

New Life Members

- 220. Christopher Riefstahl
- 221. Jeff Mornarich
- 222. Jim Kirkpatrick
- 223. Brandon Turley
- 224. Clinton Montgomery
- 225. Stacey Hunt
- 226. Chris Getchell
- 227. Shari Glidden
- 228. David Staub
- 229. Andy Moeckel
- 230. Kyle Stelter
- 231. Jeff Harrison
- 232. Michael Clonch
- 233. Parker Jansen
- 234. Dave Vandrhoff
- 235. Candace Evers
- 236. James Shelton
- 237. Shay Law
- 238. David O'Connor
- 239. Dallas Oja
- 240. Rusty Hebert
- 241. Daniel Stadel
- 242. Bryan Tikkala
- 243. Kenneth Kirsch
- 244. Judith Kirsch

Membership and Renewals

Navigating through many trying times we want to take a moment to thank all of our current annual and life members. Without your support we would not be able to assist and advocate for wild sheep in the state of Oregon. As most of you may know we have changed the way we accept new memberships and renew annual members. If you are an annual member and you have not renewed through our website we would urge you to go through the renewal process there. We are working away from paper renewals and increasing our active members through the website. Online renewals ensures we have up to date information for all members and assists in the ability to contact members to inform them on upcoming events, newsletters, and our annual banquet.

Info@OregonFNAWS.org

www.OregonFNAWS.org

Facebook: www.facebook.com/ORWSF

Instagram: @OregonWildSheepFoundation



OREGON



WILD SHEEP[®]

Foundation